



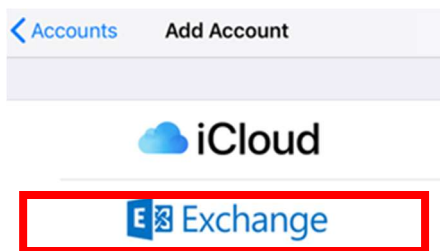
Email Setup on Mobile Devices

Explanation:

Follow the below steps to access GoTriangle email on your mobile device.

Instructions:

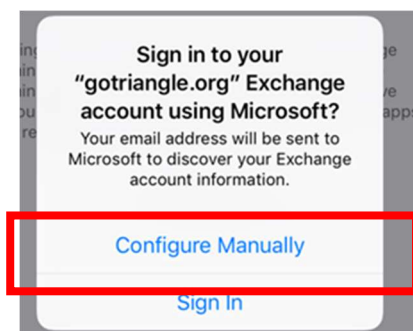
1. Go into settings
2. Tap mail
3. Tap on accounts
4. Tap **ADD ACCOUNT** and tap **Exchange**



5. Type your email address YOURUSERNAME@gotriangle.org and a description and Tap **Next**



6. Tap **Configure Manually**





7. Enter your password (same as the computer password) and tap **Next**

A screenshot of a mobile application's password entry screen. At the top, there are two buttons: "Cancel" on the left and "Next" on the right. Below the buttons, the "Email" field contains the text "jmccune@gotriangle.org". The "Password" field is highlighted with a red rectangular box and contains ten black dots. Below the password field, there is a "Description" field with the text "GoTriangle".

8. Fill out the missing information as shown below (**server, domain, and your username**) and tap **Next**

A screenshot of a mobile application's account configuration screen. At the top, there are two buttons: "Cancel" on the left and "Next" on the right. Below the buttons, the "Email" field contains the text "jmccune@gotriangle.org". Below the email field, there are three empty input fields. The "Server" field contains the text "owa.ridetta.org". Below the server field, there are two more empty input fields. The "Domain" field contains the text "tta". Below the domain field, the "Username" field contains the text "jmccune". Below the username field, the "Password" field contains ten black dots. Below the password field, there is a "Description" field with the text "GoTriangle".

9. On the following screen you can make your selections as you want and then click **save**

A screenshot of a mobile application's feature selection screen. At the top, there are three buttons: "Cancel" on the left, "Exchange" in the center, and "Save" on the right. Below the buttons, there are five rows of features, each with an icon, a label, and a toggle switch. The features are: "Mail" (envelope icon), "Contacts" (contacts icon), "Calendars" (calendar icon), "Reminders" (list icon), and "Notes" (notepad icon). All five toggle switches are turned on (green).